



A warm welcome to.....  
Broomhill Infant School  
From all Staff and Governors.





# Our School Vision

At Broomhill Infant School we are an enthusiastic, caring and co-operative team. We ensure a safe and secure environment that is welcoming to all. All our children are encouraged to achieve their best within an enriching, enjoyable and relevant curriculum with creativity at its heart. We celebrate diversity by learning from each other, and prepare our children to develop the skills and attitudes they will need for a happy and fulfilling life.





# Our School Values



## Autumn 1

Concentrate,  
Work Hard  
and be proud  
of Your  
achievements

## School Values Road Map

## Spring 1

Try new  
things and  
Do Your  
Best.

## Summer 1

Imagine-  
Dream,  
Believe,  
Achieve!



## Autumn 2

Persevere,  
dont give  
up!

## Spring 2

Consider,  
Understand  
Others and  
Be Polite.

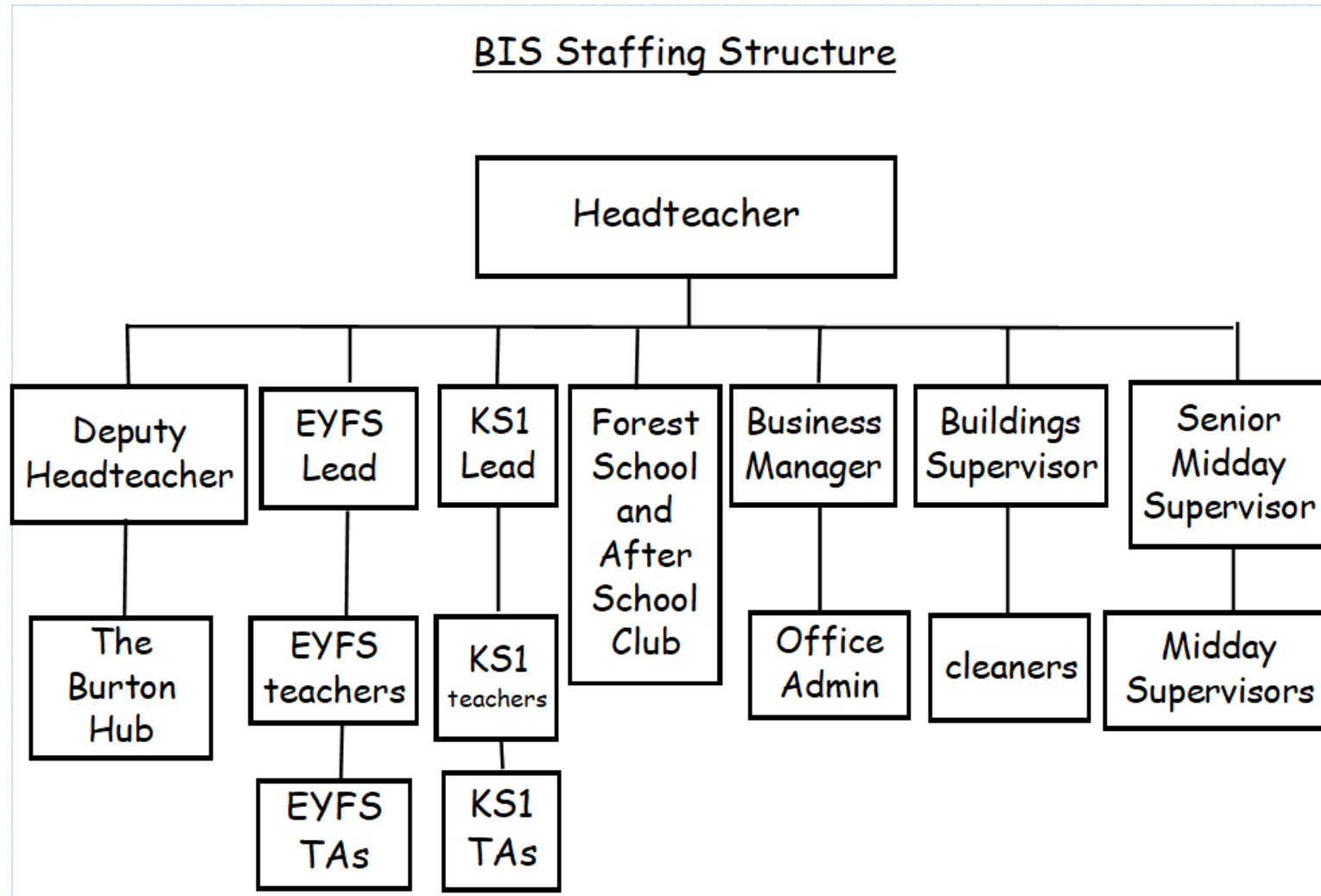
## Summer 2

Have fun  
and Be  
Happy in all  
that You  
Do.





# Our Staffing Structure





# Our Staffing Structure

- An EYFS (Early Years Foundation Stage) Unit comprising
  - 20 X F52 (Foundation Stage 2) children - Red Base
  - 20 X F52 children - Orange Base
- Y1 Class with 30 children:
  - Yellow Base
- Y1/Y2 Class (Green Base) with:
  - 10 X Y1s
  - 10 X Y2s
- Y2 Class with (Blue Base):
  - 30 X Y2s
- The Burton Hub:
  - This is an enhanced and bespoke curriculum for a small number of our children who require it.



# The staff Team

The Deputy Headteacher and SENDCO (Special Educational Needs Coordinator) is  
Mrs J Jones

The Key stage One Lead is Miss S Jones

The EYFS Lead is Mrs H Downham

The Class teachers will be:

Red Base - Mrs Downham / Miss Craven

Orange Base - Mr Shaw

Yellow Base - Mrs Jones / Mrs Hutt

Green Base - Mr Clarke

Blue Base - Miss Jones

The Burton Hub - Mrs Hawley



# Our Curriculum

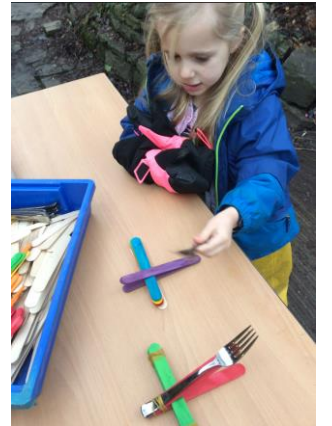


Our curriculum reflects the richly diverse community which we serve. We like to invite families in to talk about their culture so that we have first hand knowledge of other faiths and religions. The Broomhill community speaks 46 different languages in addition to English!

We are very proud of our Forest Schools provision. It is the jewel in our crown and is the golden thread which weaves through our curriculum.



# Our Curriculum



We believe that our curriculum delivers exciting and inspirational learning experiences to all pupils which is greatly enhanced by our outdoor learning in both continuous provision and Forest School.

The curriculum's breadth and richness will prove to be instrumental in improving pupils' progress. It aims to inspire pupils and raise aspirations for the future and educate them on inclusion.





# EYFS Curriculum



There are seven areas of learning and development that must shape educational programmes in early years settings. All areas of learning and development are important and inter-connected.

Three areas are particularly important for building a foundation for igniting children's curiosity and enthusiasm for learning, forming relationships and thriving.

These are the **prime areas**:

- communication and language
- physical development
- personal, social and emotional development

Providers must also support children in four specific areas, through which the three prime areas are strengthened and applied. The **specific** areas are:

- literacy
- mathematics
- understanding the world
- expressive arts and design



# How this translates to the classroom

Until Christmas, foundation stage children focus on the Prime areas, developing independence and phonics. The aim is for all children to be blending by Christmas.

In Red Base currently, you will see the children being very busy 'playing' in the class areas.....what the children don't realise is that all of this play is planned to link to the learning for the week; gross motor skills in PE, how many children can we squeeze in a hoop? (There's your maths!). For Three Little Pigs, you might see; pink playdough, wood and straw for re-enacting the story and 3 dimensional maps of the garden which meets the geography criteria, etc



# How this translates to the classroom

From January, the structure is increased. Reading is already being done in groups but now the writing begins! Children will be segmenting their own words, sentences will be orally told and then written labels will appear on everything!

Structure will be added to provision as children rotate around the areas on given times / days. Pencil control will become more refined.

By the end of Reception, the children will be equipped with all of the foundation skills to embrace the KS1 curriculum.



# Forest School

- Forest School team consists of experienced staff - two qualified level 3 forest school practitioners.
- Each class spends a full day a week accessing the Forest Schools Provision.







# Forest School

- Mondays - Orange Base
- Tuesdays - Green Base
- Wednesdays - Red Base
- Thursday - Blue Base
- Friday - Yellow Base







# Transition visits

Transition days to come in to school and meet your teacher are:

- Thursday 6<sup>th</sup> July 1:15-2:15
- Monday 10<sup>th</sup> July 9-11





# Starting School...

## Tuesday 5<sup>th</sup> September - Begin School

- Week 1 - in school until 11.30am, home visits in the afternoon.
- Week 2 - in school until 1.30pm, home visits in the afternoon.
- Week 3 - full time until 3pm

Full days from week 3 onward.

This has worked very well in previous years for children.





# The School Day...



Broomhill Infant School



8:20 Teachers fetch children from yard then  
**Morning Work Activities**  
(spelling, handwriting / fine motor, maths, retrieval current topic, retrieval past topic)

8:30 Register

**8.45 – 9:15 Book Club**

**Listening to everyone read and then focus on:**

**Mon- prediction**

**Tues- Retrieval**

**Wed - Inference**

**Thurs - Vocabulary**

**Fri - sequencing**

**9:15 – 9:20 brain gym /comfort break**

**9:20-9.45 Phonics**

**9:45-10.30 English**

**10:30-10:45 Playtime**

**10:45 – 11:00 - M&O maths**

**11:00-12:00 Maths**

**12:00-1:00 lunchtime**

**1:00-1:15 Story time**

**1:15 – 2.30 Topic**

**2:30 – 2:50 Assembly**

**3pm Home time**

Assemblies

Monday – school value

Tuesday – singing

Wednesday – class

Thursday – Achievements

Friday – Special mentions



# What to bring to school

Your child will need:

- Book bag (we will supply a reading record)
- Spare clothes, waterproof coat and suitable footwear
- Names on EVERYTHING!





# Lunchtimes

- Universal Free School Meals for all infant aged children.
- Choice of 4 meals (standard, vegetarian, jacket potato or sandwich) Chosen on a morning in school.
- Taylor Shaw specific diet plans - catering for all needs.







# Illness

- If your child is too ill to attend school, please contact school by telephone or on the Studybugs app before 9.15am and let us know on the first day of illness.
- If your child is ill at school, we will telephone immediately.
- Our policy states that if your child is sick they should be absent from school for 48 hours for sickness and diarrhoea.
- Studybugs app <http://studybugs.com>



# Breakfast and Teatime Club

Breakfast Club:

Monday - Friday 7:20-8:20am

Teatime Club

- Monday - Thursday 3-6pm
- Friday - 3-5pm

Charges per session:

Breakfast Club £7

Teatime Club - Advance (M-Th) £12

- Advance (F) £8

- Casual £13





Broomhill Infant School

# Steps to Starting School

## Steps to starting school

Build your child's confidence so that they start school confident, curious and ready to learn

Access more great advice, tips and downloadable resources at [pacey.org.uk/schoolready](https://pacey.org.uk/schoolready)



### More top tips:

- ★ Get your child ready for their new routine by switching their meal times to match those of the school day
- ★ Encourage your child to explore new environments and interact with new people
- ★ Talk to your child about what they are most looking forward to at school
- ★ Let your child practise putting their new school uniform on and taking it off
- ★ **And remember**, every child is different and starts school with different abilities



Broomhill Infant School

# Which Nursery?

Before you leave today, please would you fill in the sheet with your child's name and the nursery they are currently attending?

Many Thanks



Broomhill Infant School

# Questions?